

Validating CiscoWorks Installation on HP-UX

To validate the CiscoWorks installation and configuration, you must edit the *.cshrc* file on your system. Follow the procedures in this chapter to complete the validation of your CiscoWorks installation.

Validation Process Overview

This section briefly summarizes the steps you should follow to validate the CiscoWorks installation. In general, you will follow these overall steps:

- 1 Start the HP OpenView Console and display CiscoWorks applications.
- 2 Display the CiscoWorks processes by using the Process Manager window.

Verifying Environment Variables and Search Paths

To use HP OpenView, CiscoWorks, and Sybase, you must define the appropriate environment variables and paths in your *install.cshrc* file.

Environment variables define how your particular system is set up, such as directory paths that specify the location of files. The environment variables and paths are explained in Table 4-1.

Table 4-1 Environment Variables and Directory Paths

Environment Variable or Path	Explanation
NMSROOT	Refers to the directory <i>/usr/nms</i> where CiscoWorks was installed. If the software was installed in a different directory, substitute the appropriate directory path to ensure a correct definition of the NMSROOT environment variable.
SYBASE	Refers to the directory path where Sybase is located. The default is <i>\$NMSROOT/sybase</i> . If you selected the default, the Sybase software was installed in the <i>/usr/nms/sybase</i> directory. The SYBASE variable refers to the NMSROOT variable and the sybase directory following it.
PATH	Refers to the directory path for <i>/usr/OV/bin</i> , <i>\$NMSROOT/bin</i> , <i>\$NMSROOT/etc</i> , and <i>\$SYBASE/bin</i> . The path should be specified for HP OpenView, CiscoWorks, and Sybase.
MANPATH	Refers to the directory path for the CiscoWorks manual pages.
DISPLAY	Refers to the environment variable for the monitor on which CiscoWorks displays. The default is <i>:0</i> or <i>hostname:0</i>

Verifying Changes to the .cshrc File

The installation and configuration scripts have made changes to the *install.cshrc* file. Specifically, the scripts have:

- Set the values of the NMSROOT, MANPATH, and SYBASE environment variable
- Set the path for the CiscoWorks and Sybase executable files
- Set the path for the CiscoWorks manual pages

You should now verify that the correct changes have been made to the *install.cshrc* file. To verify the changes, perform the following steps:

Step 1 Execute the commands in the new *install.cshrc* file by entering the following command:

```
hostname% source /usr/nms/etc/install.cshrc
```

Substitute your CiscoWorks destination directory if it is not */usr/nms*.

Step 2 Display the new values of the environment variables defined for your login account by entering the following command:

```
hostname% printenv | more
```

The values of the environment variables display on the screen. Check that values similar to the following have been set:

NMSROOT	/usr/nms
SYBASE	/usr/nms/sybase
MANPATH	/usr/man

The values displayed on your screen will be different from those displayed above if you specified path names other than the defaults during the installation and configuration process.

This completes the process of verifying the *install.cshrc* file.

Displaying CiscoWorks Applications

Once you have installed and configured CiscoWorks and verified the *install.cshrc* file, you can access HP OpenView and display the CiscoWorks applications. After you start CiscoWorks, you can verify that the appropriate CiscoWorks processes are running by accessing the Process Manager window.

The Process Manager window maps several different types of CiscoWorks processes or daemons. A *daemon* is a process that performs a specific function for the system.

To access HP OpenView and CiscoWorks, perform the following steps:

Step 1 Start HP OpenView by entering the following command:

```
hostname% ovw
```

The HP OpenView default network map appears, displaying all the IP (Internet Protocol) devices on your network (Figure 4-1).

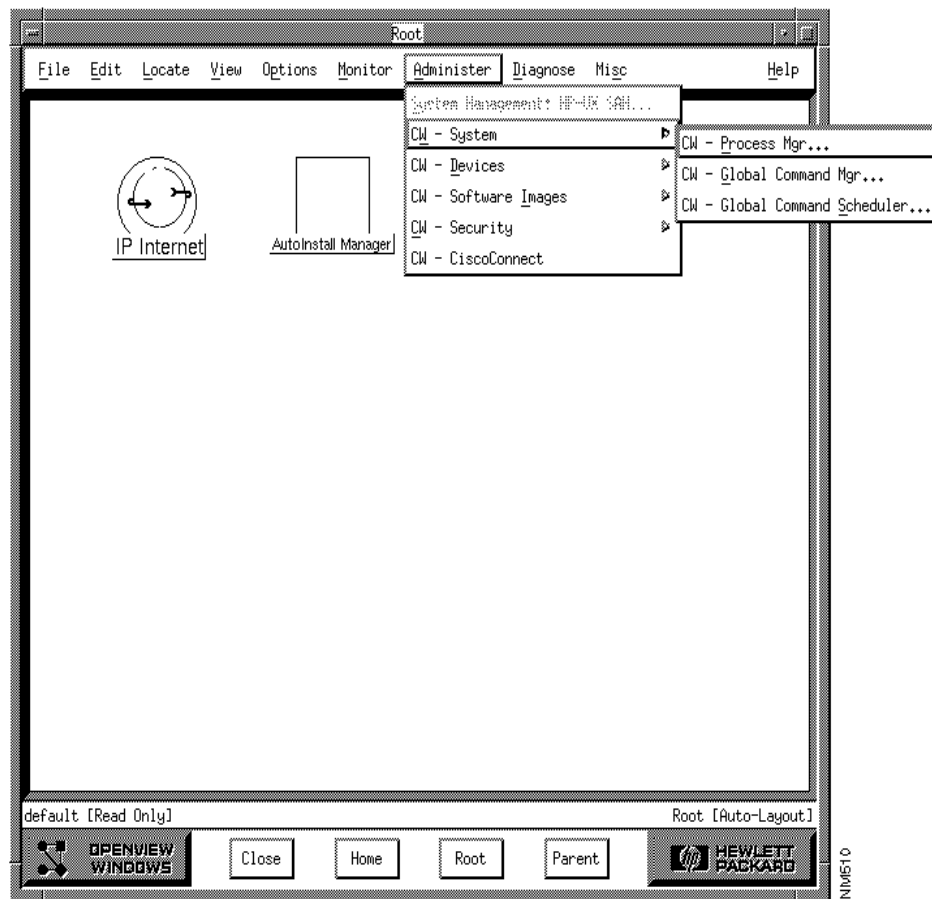


Figure 4-1 CiscoWorks Menu Options Within HP OpenView

The CiscoWorks applications are distributed among the HP OpenView menus. Some of the CiscoWorks menu items begin with **CiscoWorks** or **CW**.

Step 2 Select **Administer>CiscoWorks System>Process Mgr.**

The Process Manager window opens (Figure 4-2).

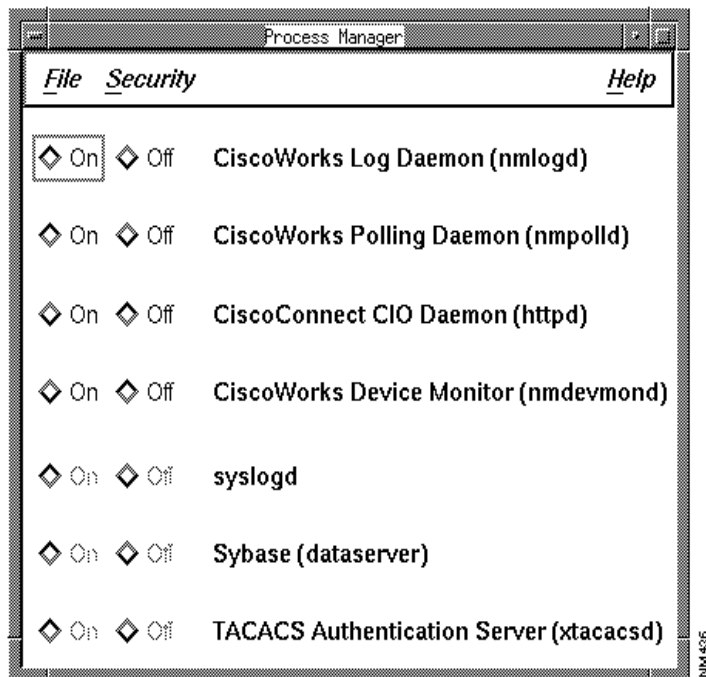


Figure 4-2 Process Manager Window

Step 3 To start a process, click the **On** button next to it.

If the process starts successfully, the **On** button is enabled.

Step 4 To exit the Process Manager application, select **File>Exit**.

This completes the process of starting HP OpenView and CiscoWorks and accessing the Process Manager window.