

## Appendix A

### Adapter Window

This appendix explains the use of the Adapter selection in the Workgroup Director window. This selection activates a window that contains basic information about the adapter, such as model and serial numbers, driver and management versions, and diagnostic errors.

Figure A-1 shows the Adapter window, which displays basic information about the adapter.

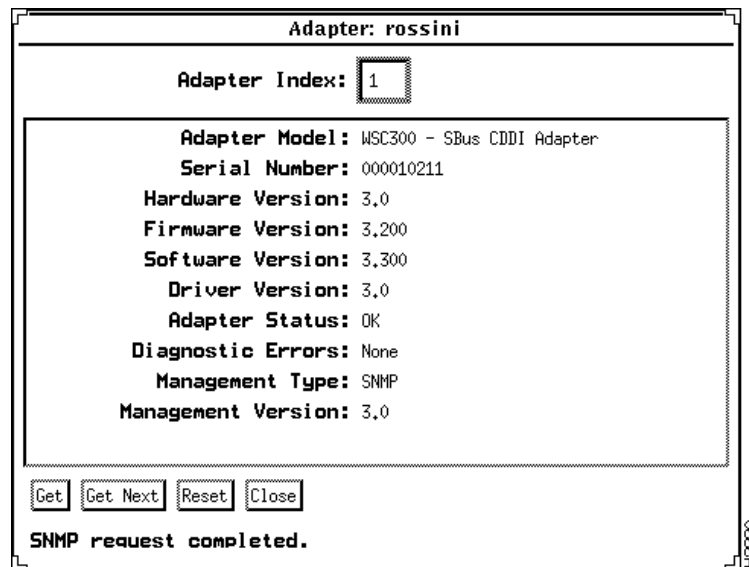


Figure A-1 Adapter Window

The Adapter window parameters are described following:

- Adapter Index—Shows the index number for the adapter, assigned by the workstation (that is, a slot number on HP workstations and an device number on Suns).
- Adapter Model—Displays the model of the adapter installed in your workstation.

- Serial Number—Displays the adapter serial number.
- Hardware Version—Displays the hardware version of the adapter.
- Firmware Version—Displays the firmware version currently installed on the adapter.
- Software Version—Displays the software version that is currently installed on the adapter.
- Driver Version—Displays the version of the driver installed in your workstation.
- Adapter Status—Indicates whether the adapter has successfully completed its self-diagnostics. It reflects the current alarm status of the adapter, as follows:
  - OK—The adapter has detected no faults or other problems.
  - Major Fault—A major fault occurs if any of the following components fail:
    - ram
    - rom
    - flash
    - mac
    - rcv\_ctr
    - serial eeprom
    - phy
    - bm
    - mac\_lb
    - phy\_lb
    - phy2\_lb
    - itf\_lb
    - itf2\_lb
    - dual\_lb
    - sbug
- Diagnostic Errors—Displays a list of diagnostic errors found while the adapter was completing its self-diagnostics. When the adapter successfully completes its diagnostics, this parameter displays “None.”  
 Following are descriptions of diagnostic errors that may appear:
  - ram—Adapter random-access memory

- rom—Adapter read-only memory
- flash—Adapter Flash memory
- mac—Media Access Control chip
- rev\_ctr—Receive counter
- ser\_eeprom—Serial EEPROM
- phy—Physical Layer Protocol chip
- bm—Buffer memory
- mac\_lb—Failure of the loopback test at the MAC chip
- phy\_lb—Failure of the loopback test at the PHY chip
- phy2\_lb—Failure of the loopback test at the second PHY chip
- itf\_lb—Failure of the loopback test at the external interface
- itf2\_lb—Failure of the loopback test at the second external interface
- dual\_lb—Failure of the loopback test at the dual interface
- sbug—SBUG chip
- 68302—68302 chip
- ring—Hub internal ring
- Management Type—Displays the type of management agent running on your workstation.
- Management Version—Displays the version of the management agent running on your workstation.

