

Using FTP Server with CiscoRemote Plus

You can use the FTP Server application to enable your PC to act as an FTP server. Remote systems running FTP software can then log in to your PC to read and copy files. FTP Server supports multiple connections simultaneously.

Although you can configure FTP Server to take advantage of many advanced features, it also provides basic capabilities that require little or no administration. You can define a list of authorized users, and restrict directory access and access privileges for specific users. You can create ASCII text files of greeting messages sent to remote users at various times during a connection. You can also give your FTP server a name that appears to remote users when they connect.

FTP Server provides many features that help you set up your FTP server. This chapter describes the basic FTP Server features; you can also explore many other features by accessing the online help information or by referring to the document *CiscoRemote Plus Administrator Guide*, which is available on the CiscoRemote Plus CD.

Starting FTP Server

You must start FTP Server to allow other remote systems access to your PC.

Take the following steps to start FTP Server:

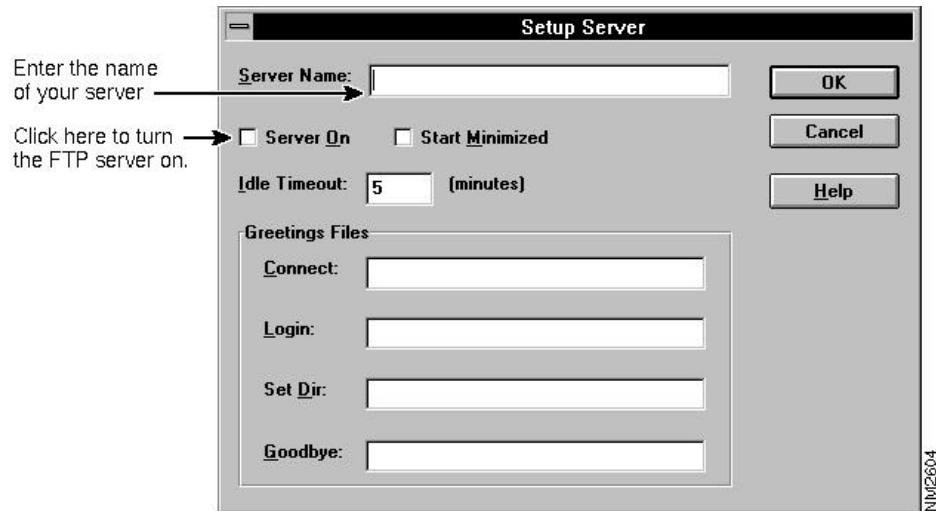
Step 1 Click on the **FTP Server** icon in Net Launcher.

Step 2 Select **Setup Server** from the Options menu.

The Setup Server window opens. (See Figure 10-1.)

Defining User Access

Figure 10-1 Setup Server Window



Step 3 Enter the name of your server in the Server Name field.

Step 4 Click on the **Server On** checkbox to select it (an X should appear).

Step 5 Click **OK**.

Defining User Access

You assign a username and password to each remote user who will have access to your computer. You also specify which directories remote users can access and the access privileges for each directory.

Take the following steps to define access for a remote user:

Step 1 Select **Setup Users** from the Options menu.

The Setup User window opens. (See Figure 10-2.)

Figure 10-2 Setup User Window

The screenshot shows the 'Setup User' dialog box. At the top is the title bar 'Setup User'. Below it, on the left, are the following fields and controls: 'User Name:' followed by a text box and a small downward arrow; an unchecked checkbox labeled 'Anonymous'; 'Password:' followed by a text box; 'File Access' section with an unchecked checkbox labeled 'No Restrictions'; 'Directory:' followed by a text box and an 'Update' button; two unchecked checkboxes labeled 'Allow Read' and 'Allow Write'; a 'Directories' section with three buttons ('Edit', 'Delete', 'InitialDir') and a large empty text area; and 'Initial Dir:' followed by a text box. On the right side of the dialog are four buttons: 'OK', 'Cancel', 'Remove', and 'Help'. A vertical text 'NM2466' is located on the far right edge of the dialog box.

Step 2 Enter a username in the User Name field.

Step 3 Enter a password in the Password field that the user must use to access your computer.

Exiting FTP Server

Step 4 Specify (in the Directories area) the directories the remote user can access and the access privileges for each directory.

To specify access to specific directory, enter the directory path in the Directory field and then click on the **Allow Read** and **Allow Write** checkboxes to specify whether the user can read or write (change) files in the directory.

Step 5 Click **OK**.

Remote users with access to your computer can now transfer files as long as your FTP Server application is running.

Exiting FTP Server

Select **Exit** from the File menu to close FTP Server. FTP Server terminates all current connections and quits.

Other Features

For more information about FTP Server, refer to the document *CiscoRemote Plus Administrator Guide*, which is available on the CiscoRemote Plus CD. FTP Server's additional features allow you to do the following:

- See a list of all users who are allowed to access your PC or a list of current users connected to your PC by selecting commands from the Display menu.
- Send greeting messages to remote users during a connection by selecting **Setup Server** from the Options menu.
- Specify the length of time a remote connection can remain idle before it is automatically terminated by selecting **Setup Server** from the Options menu.
- Log the information generated while FTP Server is in use. You can save the information to a file by selecting **Log to File** from the Options menu. You can also display the information in the CiscoRemote Plus Console by selecting Console from the CiscoRemote Plus program group, then selecting **Log to Console** from the Options menu. For more information about the CiscoRemote Plus Console, see the chapter "Using Console and Connect with CiscoRemote Plus."