

# Using Telnet with CiscoRemote Plus

---

You can use the Telnet application to log in to remote computers, called hosts or Telnet servers, and access their services. When you are connected, your computer functions like a terminal connected to the Telnet server. You can execute commands, run programs, and access special services offered by the Telnet server.

Telnet can emulate Digital Equipment Corporation (DEC) VT220, VT102, and VT52 terminals and communicate with a server using the Telnet protocol.

When you use Telnet to access a Telnet server, you must use the server's commands and follow its user interface conventions. With Telnet, you can run script files, create and use login scripts, and redefine your keyboard to better match the type of terminal your PC is emulating. You have to become familiar with a Telnet server's commands and programs to use it effectively. Ask the server administrator for this information.

## Connecting to a Telnet Server

Before you connect to a Telnet server, gather the following information:

- Name or IP address of the Telnet server
- Login information (your username and, if necessary, your password)

If you do not have this information, contact the administrator of the Telnet server you want to access.

## Connecting to a Telnet Server

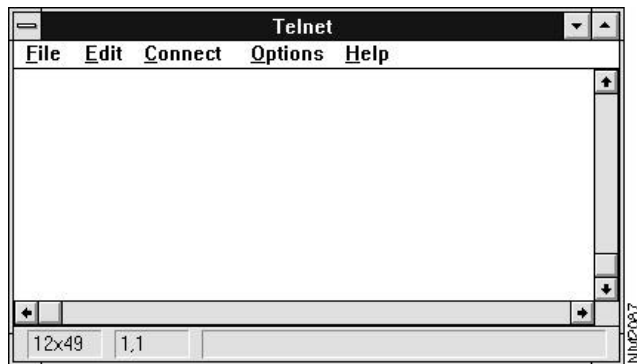
---

Take the following steps to connect to a Telnet server:

**Step 1** Double-click on the **Telnet** icon in the CiscoRemote Plus program group.

The Telnet window opens. (See Figure 12-1.)

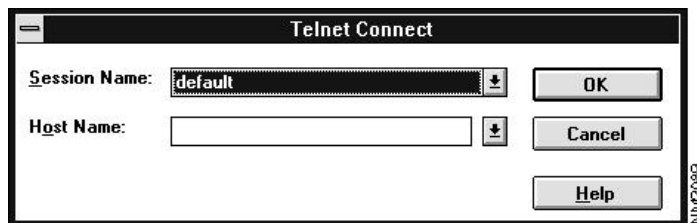
**Figure 12-1 Telnet Window**



**Step 2** Select **Connect** from the Connect menu.

The Telnet Connect window opens. (See Figure 12-2.)

**Figure 12-2 Telnet Connect Window**



**Step 3** Enter the name or IP address of the Telnet server in the Host Name field.

---

**Note** To avoid entering the name or IP address for a specific host each time you want to connect, you can enter a name in the Session Name field. When you click OK, the new session name appears in the Connect menu and you can select it to establish your connection.

---

**Step 4** Click **OK**.

**Step 5** Enter your account name at the login prompt.

**Step 6** Enter your password, if necessary.

**Step 7** Press **Enter**.

You are now logged in to the Telnet server and can enter commands.

---

**Note** You must use the commands accepted by the type of server you have accessed.

---

## Disconnecting from a Telnet Server

Take the following steps to disconnect from a Telnet server:

**Step 1** Log out of the remote system using the appropriate command.

**Step 2** Select **Disconnect** from the Connect menu.

Your session with the Telnet server is ended.

## Other Features

For more information about Telnet, refer to the document *CiscoRemote Plus Administrator Guide*, which is available on the CiscoRemote Plus CD. Telnet's additional features allow you to do the following:

- Save or print the information on your screen by selecting **Save** or **Print** commands from the File menu.
- Run script files during a connection by selecting **Run Script** from the File menu.
- Copy and paste information between the Windows clipboard and your screen by selecting **Copy** and **Paste** from the Edit menu.
- Redefine the keys on your keyboard to better match the type of terminal your PC is emulating by selecting **Keyboard Setup** from the Options menu.
- Customize session characteristics to better match a specific Telnet server by selecting **Telnet Setup** from the Options menu.
- Have the Telnet Server application use a login script to log in automatically to a Telnet server by selecting **Telnet Setup** from the Options menu.
- Save all information received during a connection, including error messages, as a file by selecting **Log to File** from the Options menu.