

Using TN3270 with CiscoRemote Plus

You can use the TN3270 application to communicate with remote IBM systems. This chapter also describes the basic features of TN3270. You can also explore the many other features of TN3270 by accessing the application's online help information, or by referring to the document *CiscoRemote Plus Administrator Guide*, which is available on the CiscoRemote Plus CD.

Starting TN3270

Before you connect to a host system, gather the following information:

- Host name or IP address of the system you want to access
- Login information needed by the host system (your username and, if necessary, your password)

Obtain this information from your network administrator, or from the person whose system you want to access.

Take the following steps to establish a connection to the host system:

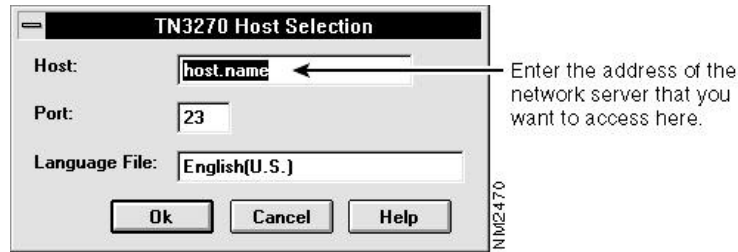
Step 1 Double-click on the **TN3270** icon in the CiscoRemote Plus program group.

Step 2 Select **Connect** from the Connect menu.

The TN3270 Host Selection window opens. (See Figure 13-1.)

Disconnecting from a Host System

Figure 13-1 TN3270 Host Selection Window



Step 3 Enter the host name or IP address of the host system in the Host field.

Step 4 Click **Ok** to establish a connection.

The login prompt for the system you specified appears.

Step 5 Enter your account name at the login prompt and, if necessary, enter your password at the password prompt, then press the **Enter** key.

You are now logged in to the host system.

If you frequently connect to the host system, you can speed up the connection process by specifying the host name or IP address of the system as the default and using the Auto Connect feature. (Auto Connect can be enabled from a checkbox in the TN3270 Setup Window.)

Disconnecting from a Host System

To disconnect from the host system, select **Disconnect** from the Connect menu or select **Exit** from the File menu.

Other Features

For more information about TN3270, refer to the document *CiscoRemote Plus Administrator Guide*, which is available on the CiscoRemote Plus CD. The additional features of TN3270 allow you to do the following:

- Modify connection characteristics to better match the host system by selecting **TN3270 Setup** from the Options menu.
- Use the Auto Connect feature to connect to a specific host automatically when you double-click the TN3270 application icon. To access the Auto Connect feature, select **TN3270** from the Options menu.
- Customize the colors and fonts used in the TN3270 window using commands in the Options menu.
- Print the data in the terminal screen area by selecting **Print** from the File menu.
- Copy and paste data between the Windows clipboard and the terminal screen by using commands in the Edit menu.

Other Features
