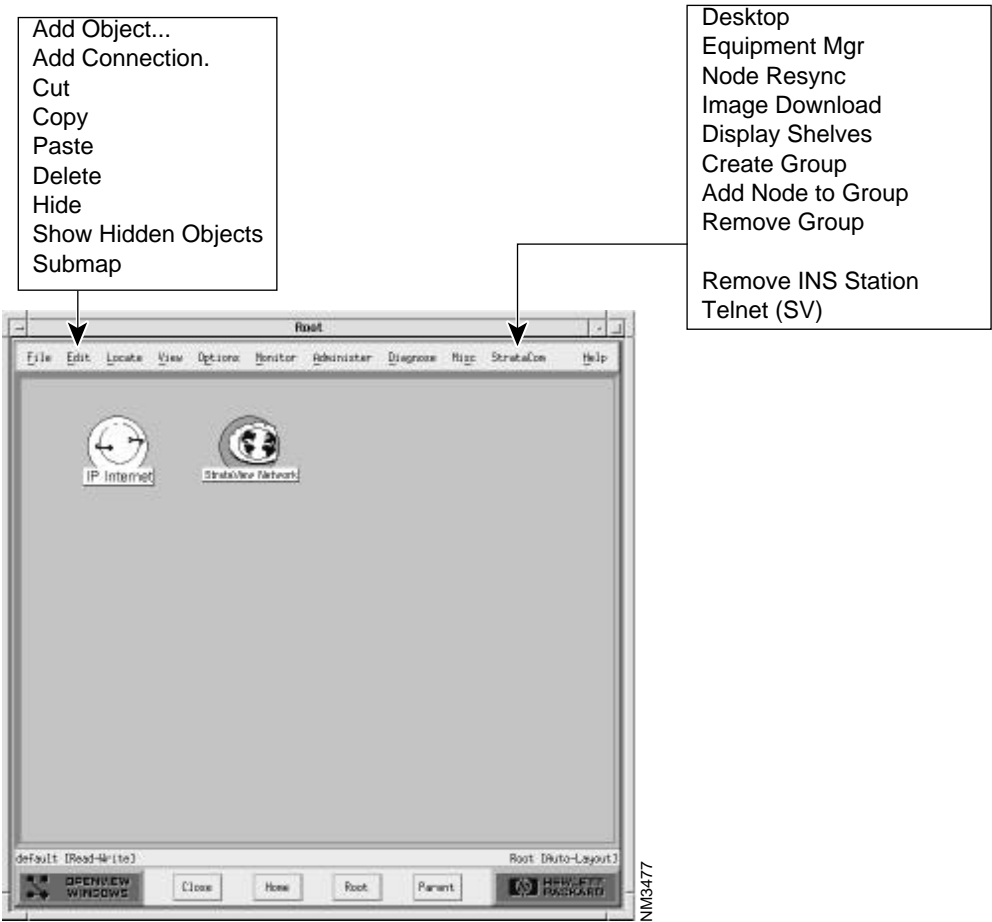


HP OpenView Topology

Overview

This appendix describes the menus and commands of the HP OpenView topology toolsets. You access these tools by invoking the ovw command after starting StrataView Plus core processes.

Figure D-1 HP OpenView Topology Menu Bar



Desktop Use this menu to launch the SV+ Desktop icons.



NM3478

Equipment Mgr Use this menu to present the Equipment Manager window.



NM3479

- | | |
|------------------------|--|
| Node Resync | Use this menu to upload configuration information to a selected AXIS node. |
| Image Download | Use this menu to download a selected software and/or firmware version for use within the selected network topology node (AXIS). |
| Display Shelves | Highlight an AXIS node on the topology map when using this command to view the feeder node in your network. |
| Create Group | Select two or more nodes in the topology map to use this menu. A group icon appears on the topology map when this operation is complete. |
| Add Node to Group | Highlight a group and a selected node to bring the selected node into the group with this command. |
| Remove Group | Highlight a group to remove its icon from the network topology map, and to redistribute its objects onto the map. |
| Remove Node From Group | Highlight a group, chose a node from the resultant submap, and use this command to remove it. |

Remove INS Station	Highlight an INS icon and use this command to remove it from the topology map. Using the delete object command from the Edit submenu will not delete INS objects.
Telnet (SV)	Use this menu to present a telnet command window.

