

# SV+ Error Log Administration and Event Log

---

This chapter describes the

- Error Log Administration
- Event Log

## Error Log Administration

Error Log Administration is one of the five choices on the SV+ Desktop, as shown in Figure 4-1.

**Figure 4-1** Error Log Administration Button



This window provides a time-stamped list of each StrataView Plus process, along with a text message describing the process. The Error Log Administration window can be cleared so that you can watch current SV+ messages. If you close the window and re-open it, the messages that were cleared will be redisplayed.

**Figure 4-2 Error Log Administration Window**



## Event Log

The StrataView Plus Event Log displays descriptions of network- and operator-generated occurrences. Internally, event descriptions are generated as a result of the trap information which transpires between the network management system and the network agents. These traps are controlled by Simple Network Management Protocol (SNMP) processes.

An SNMP agent is software that is capable of answering valid queries from an SNMP station (such as your StrataView Plus workstation), about information defined in the Management Information Base (MIB). A network device that provides information about the MIB to StrataView Plus has an SNMP agent.

StrataView Plus and the SNMP agents exchange messages over the network's transport layer protocol. SNMP conducts five valid types of messaging:

Get-Request	Used by StrataView Plus to retrieve information from network devices that have SNMP agents.
Get-Response	Response by network agent to the Get-Request message. The response typically includes system information such as the name of the system, how long the system has been running, and number of network interfaces on the system.
Get-Next-Request	Used with Get-Request when compiling the list of objects, to ask for the next object in the table.
Set-Request	Enables remote configuration of parameters on a device.
Trap	An unsolicited message by an SNMP agent to the StrataView Plus. Trap messages inform the server about the occurrence of a specific event.

The StrataView Plus SNMP traps are enhanced by a Robust Trap Mechanism (RTM) to ensure detection and retrieval of missed traps. With RTM, StrataView Plus can maintain sequential tracking of traps from specific agents. SV+ detects missed traps as based on sequence numbers and uploads the missing number from the agent using SNMP Get-Requests.

---

**Note** HP OpenView expects to receive SNMP traps only on port 162. The RTM front end therefore registers with the agent on a different pre-configured port (default: 2500) for receiving traps.

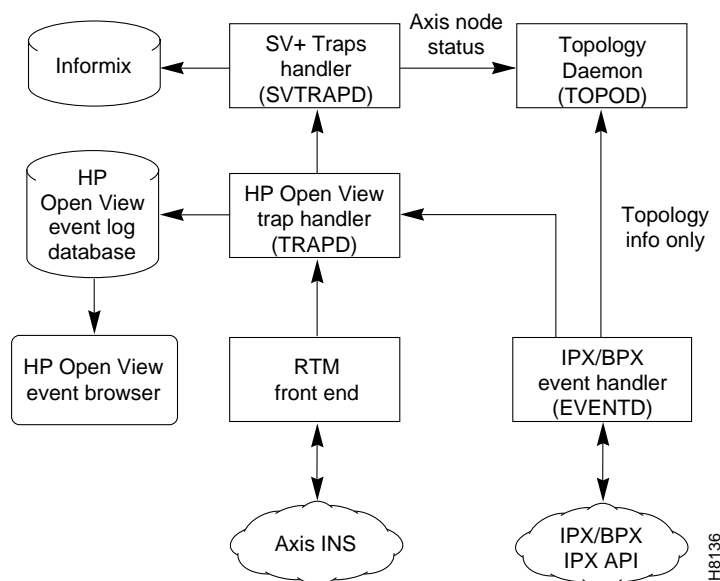
---

The AXIS node reports the aggregate shelf alarm status. This is evident at the LED on the node which is affected by a specific new trap.

## The Event Log Database

The StrataView Plus Event Log Database is an Informix® Relational Database used to capture event log messages from the network. After 8192 records have been captured, each succeeding record causes the database to wrap around, replacing the oldest record with the newest record. The Event Log window displays the latest events from the node. As long as the scroll bar is at the bottom of the log, new data is displayed as it arrives from the node.

**Figure 4-3 Event Log Database Flow Diagram**



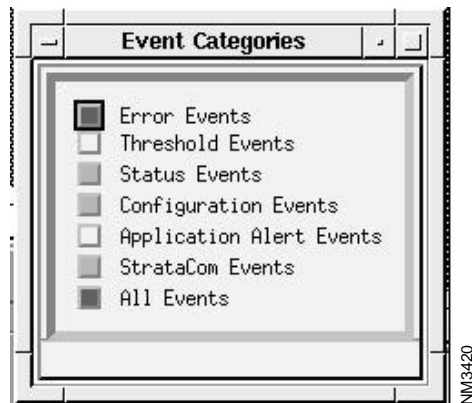
Once these events have been captured in the database, users can selectively filter the data using their own search criteria. This search capability is a flexible tool for troubleshooting the nodes in a network. You can configure the event log to filter reports by network name (non-structured network), domain (structured network); time, date, and time zone; node name; alarm type; and specific search strings.

You can save the filtered Event Log to a text output file for later printing or examination, or output it directly to a printer (if one is connected and configured, i.e., “lpr device” for printer).

## Browse Events

The 8.1 Release of StrataView Plus uses the HP OpenView Event Browser application to display the list of events and alarms. The event browser application allows you to selectively browse through the events. StrataCom's network elements events are stored under the *StrataCom Events* category.

**Figure 4-4** StrataCom Events Category Window

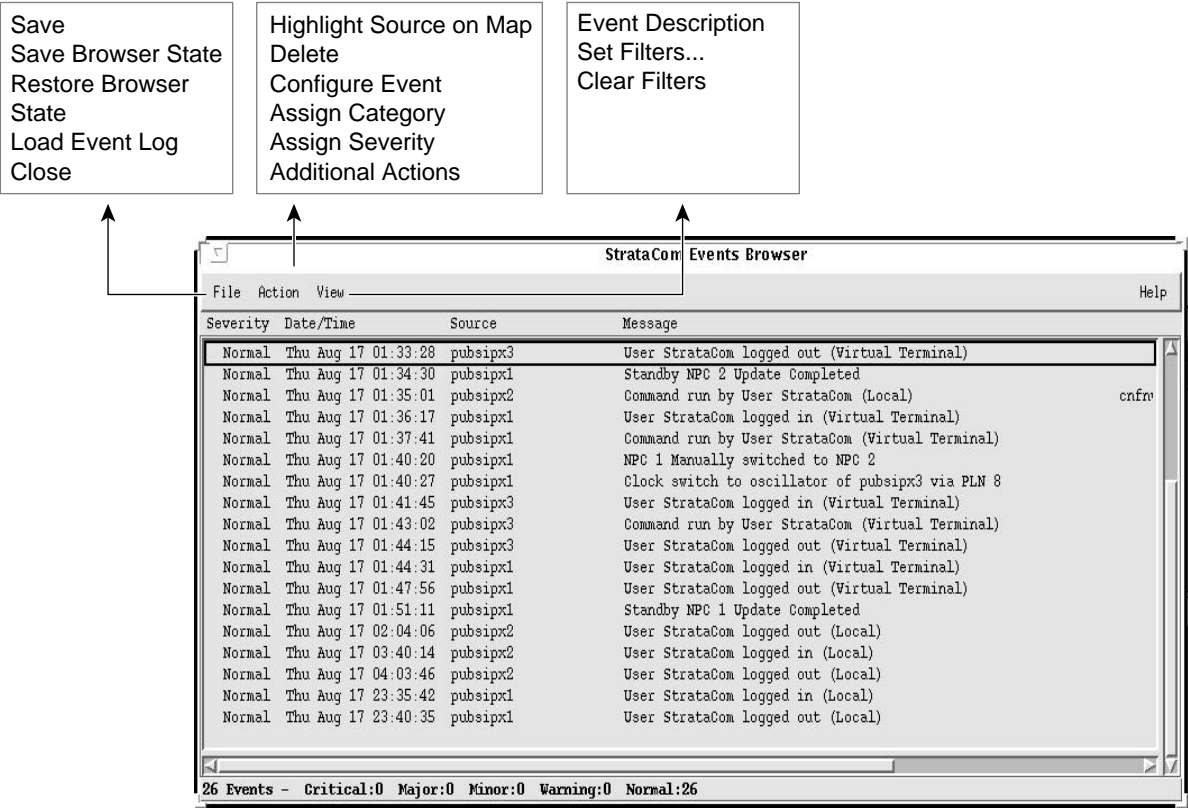


When you select the StrataCom Events category, all events triggered by StrataCom's network elements are shown in the new window (called the browser window).

Event Browser Window

The StrataCom Events Browser is presented as a result of selecting an item in the Event Categories dialog window. This window contains menus for configuring event displays and saving event information.

Figure 4-5 Event Browser Window



- Severity This column displays the criticality of the event. Severity values are: critical, major, minor, warning, and normal. You can modify event severity by using the Action-Assign Severity menu of this window.
- Date/Time The week, calendar date, and time of event occurrence.
- Source The object identifier affected by the event.
- Message Description of the event.

## Event Browser - File - Save - Selected Events Menu

**Figure 4-6** Event Browser: Selected Events

## Event Browser - File - Save - Filtered Events Menu

**Figure 4-7** Event Browser: Filtered Events

## Event Browser - File - Save - All Events in Category Menu

**Figure 4-8** Event Browser: All Events in Category

Event Browser - File - Save Browser State

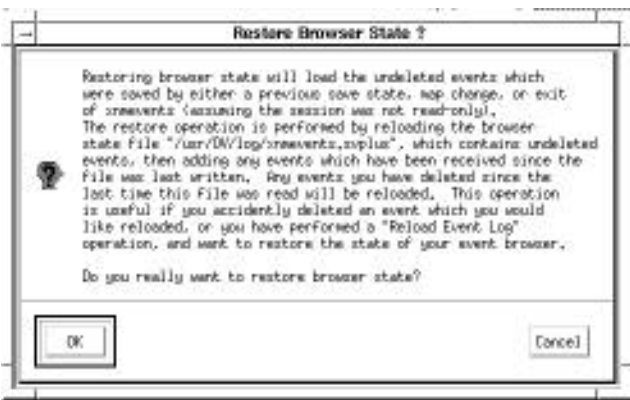
Figure 4-9 Event Browser: Save Browser State



NM3425

Event Browser - File - Restore Browser State

Figure 4-10 Event Browser: Restore Browser State



NM3426

Event Browser - File - Load Event Log - Filtered Menu

Figure 4-11 Event Browser: Load Event Log (Filtered)

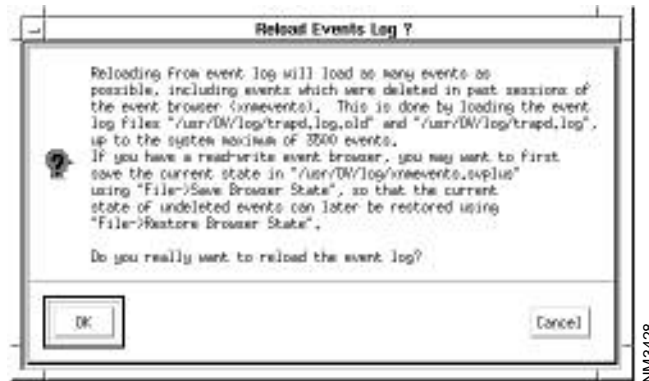


NM3427



## Event Browser - File - Load Event Log - Unfiltered Menu

**Figure 4-12 Event Browser: Load Event Log (Unfiltered)**



## Event Browser - File - Close Menu

Use this menu to exit the Event Log Browser window. You can reopen the window by clicking on an item in the Event Categories dialog window.

## Event Browser - Action - Highlight Source on Map Menu

Use this menu to highlight the source of selected events in the Topology window.

## Event Browser - Action - Delete - Selected Events Menu

Use this menu to remove selected events, regardless of event category, from the Event Browser window.

## Event Browser - Action - Delete - Filtered Events Menu

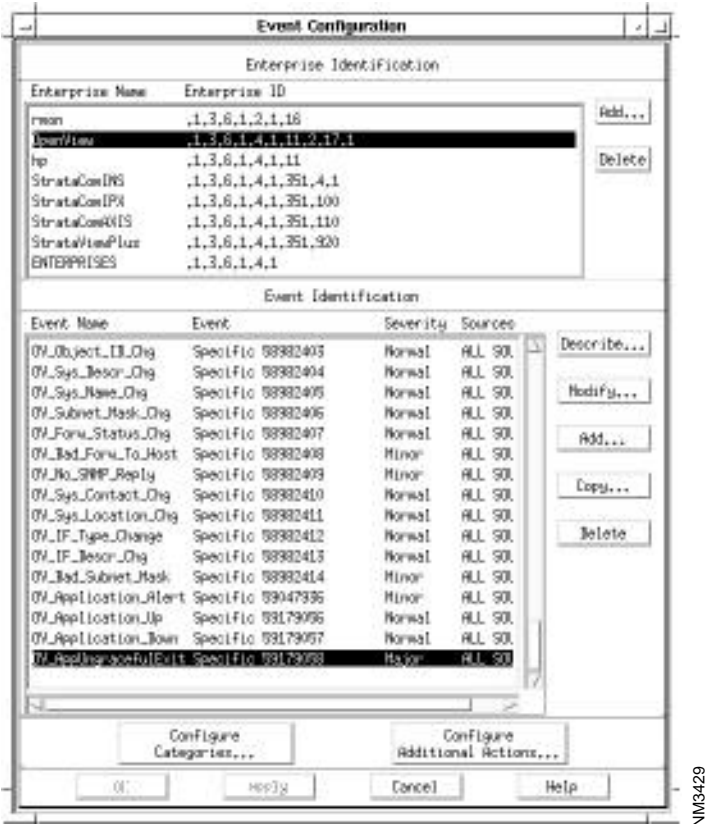
Use this menu to remove all filtered events, regardless of event category, from the Event Browser window.

## Event Browser - Action - Delete - All Events in Category Menu

Use this menu to clear all events within the Event Browser window associated with the selected event category.

Event Browser - Action - Configure Event

Figure 4-13      Event Browser: Configure Event



Event Browser - Action - Assign Category Menu

Figure 4-14      Event Browser: Assign Category



### Event Browser - Action - Assign Severity Menu

Use this menu to assign one of the following assessments to selected events:

- Critical
- Major
- Minor
- Warning
- Normal

### Event Browser - Action - Additional Actions Menu

**Figure 4-15** Event Browser: Additional Actions



Event Browser - View - Event Description Menu

Figure 4-16      Event Browser: Event Description



Event Browser - View - Event Filters Menu

Figure 4-17      Event Browser: View Event Filters

