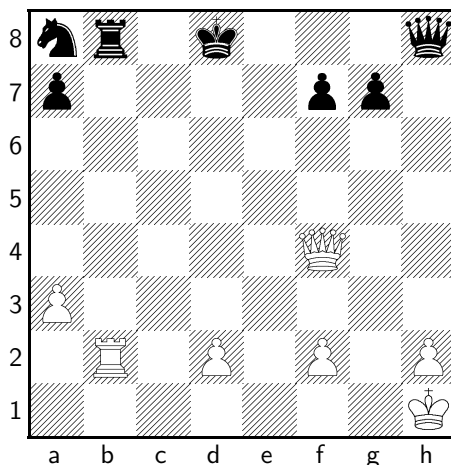


Basic Skills Checklist



1. Demonstrate how the **pawn** moves.
2. Demonstrate how the **knight** moves.
3. Demonstrate how the **bishop** moves.
4. Demonstrate how the **rook** moves.
5. Demonstrate how the **queen** moves.
6. Demonstrate how the **king** moves.
7. Demonstrate **king-side castling**.
8. Demonstrate **queen-side castling**.
9. In the figure above, show the white Queen's position in **Algebraic Notation**: _____
10. Show "Black Queen takes Pawn" in **Short Algebraic Notation**: _____
11. State the relative value of the pieces.
12. Explain the terms **rank**, **file**, **diagonal**.
13. Explain the term **center** and show the center squares.
14. Place a King in **check** position on the chessboard.
15. Place a King in **checkmate** position on the chessboard.
16. Demonstrate a **stalemate** position on the chessboard.
17. Explain the **touch move** rule.
18. Demonstrate a **pin**.
19. Demonstrate a **fork**.
20. Demonstrate a **skewer**.
21. Set up a **back-rank** mate on the chessboard.
22. Demonstrate a **discovered attack**.
23. Explain the three ways to get out of check.
24. Explain when the **middle-game** begins in chess.
25. Explain when the **end-game** begins in chess.
26. Name at least three basic guidelines/rules for **opening** a chess game.
27. Name at least two basic guidelines/rules used in the **ending** of a chess game.
28. Show how to prevent getting checkmated by the **fool's mate**.
29. Show how to prevent getting checkmated by the **scholar's mate**.
30. Demonstrate a checkmate using a king and queen against a lone king.
31. Demonstrate a checkmate using a king and two rooks against a lone king.